

The motorised lock for all applications



The fully motorised multipoint locking mechanism – in a class of its own



Modern living is an expression of an attitude towards life. The highest levels of convenience, maximum energy conservation and comprehensive security therefore represent the core requirements of the future home. Doors contribute significantly to achieve this. With **multitronic 881** FUHR offers one of the most modern and cutting-edge locking systems in its class. Whether house or apartment building, GP surgery or public building - **multitronic 881** is always the first choice.



Convenience

Opening and closing takes place electronically – it seems to happen by itself. As soon as the door closes the lock engages and locks automatically, safely, gently and securely shut. It is unlocked via modern access control systems depending on personal preference. The ultimate in comfort and convenience!

Security

Premium quality materials, comprehensive testing and the FUHR brand name guarantee effective security, due to a long product life and lasting reliability. Compatibility with systems meeting the highest security requirements and potential integration into monitoring systems add to the overall security.

Energy

Permanent multipoint locking ensures constant impermeability. Heat remains inside the house, air-conditioned air does not escape. Precious energy is conserved, a comfortable environment is created and energy costs are reduced!





Comfortable opening from outside

No more tedious key turning to open a door! Simply push a button instead – and the door is unlocked. Shopping bags no longer have to be put down and umbrellas no longer have to be clenched under your arm.

3-channel radio frequency technology makes all this possible. Our standard radio key allows you to open the main entrance door and either garage door or gate to your driveway conveniently at the same time.

Furthermore, additional access control components are available to meet individual requirements. Apart from transponder or radio control keypad, the fingerprint scanner is considered the most modern and most convenient type of access control. Your authorised fingerprint is all you need!



Radio key

Only one radio key is necessary to operate up to three applications, such as main entrance door, garage door and gateway.

Keyless opening So convenient, so comfortable

Easy and safe opening from inside

From the inside the door can be opened at lightning speed at any time. Simply by means of the lever handle, the intercom, or the wall-mounted switch, that can be positioned anywhere. In conjunction with an automatic swing door operator **multitronic 881** is ideally suited for automated doors, which are used in barrier-free wheelchair-accessible living. The door can be unlocked from any point inside the house or apartment. The radio transmitter can even be integrated into the control unit of a wheelchair. In the event of power failure, the door can be opened at any time with an ordinary key.

Built-in Diversity of Applications

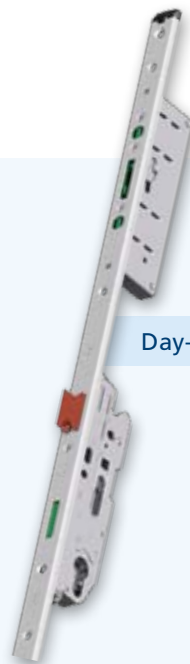
For residential buildings comfort in terms of lever operation to unlock the door is of paramount importance, whereas secure and certified emergency escape door function is necessary for commercial buildings. **multitronic 881** is equipped with a panic function as standard and meets the legal requirements of a panic exit lock.

Always on the safe side

Ideal for use in institutions, where a special duty of care and supervision exists and controlled opening with simultaneous signalling is required, such as for example in nursery schools. The use of optional components means unlocking the door is indicated by visual and audible signals which means that unauthorised opening of the door can no longer go unnoticed.



Reassuring security at all times due to automatic locking



Day-Latch-Function



Permanent-Open-Function

Reliable comfort

The thought of 'Did I lock the door?' shortly after leaving the house has probably crossed everyone's mind at some time. FUHR **multitronic 881** renders 'forgetting' impossible. The motorised electric multipoint lock locks main and side entrance doors automatically. That means increased intruder protection and security standards for private and public buildings.

Intelligent control technology and connectivity included as standard allow for an almost unlimited freedom of design. It is for example possible to view the locking status at anytime and anywhere. The illuminated red LED light on the control unit located on the internal aspect of the door is not the only indicator that the lock is engaged, the locking status can also be identified by bus systems belonging to modern process control technology or building management systems.

Intelligent locking options

Depending on a project's specification, there may be a requirement to disable the entire locking system temporarily. For this purpose two optional functions are available.

In the mode '**Day-Latch-Function**' only the latch secures the door during the day time. Ideally suited to heavily frequented doors such as commercial or apartment buildings, where controlled access is required. Activation is achieved via a timer or a switch.

In the mode '**Permanent-Open-Function**' latch and deadbolt are permanently retracted. Unimpeded access in both directions is possible without access control. Ideally suited for shops, surgeries or other buildings with a high volume of untrained traffic. This is particularly convenient for the residential sector, where for example, people may wish to leave briefly to go into the garden.

The selected function is displayed via an illuminated green LED on the control unit.



Cross-linking with bus-systems that are part of modern process control technology or complex building management systems – meeting EIB/KNX standards as a matter of course.

The electronic ensures rapid automatic multiple locking when the door is closed in a matter of seconds. Securely and gently.



Well-equipped against uninvited guests



Almost half of all burglaries occur during the day

Not only welcome guests enter through the door. Main entrance, side and apartment entrance doors are still preferred by intruders. What many people don't know is that an alarmingly high level of burglaries occur in broad daylight. Thieves are very aware that many entrance doors are not locked at all or locked insufficiently during the day. Not so, when the door is safeguarded by a **multitronic 881!** The door is always completely locked. This is convenient and can be verified at any time. It provides the highest level of security and the certainty to be well protected.

Sensory monitoring of door leaf and bolt position is included as standard. This means the locking status can be verified and displayed reliably at any time. Not only in the residential, but also in the commercial sector. Typically this occurs via an LED on the control box located internally. An optional LED may be connected to the external side. Additionally connection points for alarm systems and/or building management systems are also included as standard. Even remote monitoring via mobile phone, internet or Wi-Fi is possible. That really is comfortable security at the highest level.



The reliability of **multitronic 881** has been confirmed independently in writing. Numerous tests confirmed a consistently high latching force. Depending on the locking type system certification is available up to resistance class 4 (according to DIN V ENV 1627).

The secure way to save energy



The locking system for every season

Retaining property value is close to every careful Landlord's heart. They take wise precautions – with suitable provision and products. Regardless of whether core subjects such as a building's security, energy efficiency or sustainable construction are concerned.

In this respect the main entrance door is increasingly scrutinised. Not only are leaky doors responsible for a verifiable loss of energy, they also cause drafts and therefore an uncomfortable environment.

multitronic 881 supports the energy saving properties of any entrance door.

The motorised multipoint lock achieves reliable compression for total draught-proofing across the entire height of the door leaf, resulting in permanent air tightness and reducing draughts to a minimum. Heat or air-conditioned air stays inside, heat or cold remain outside. This is also true for noise. This illustrates that a sense of wellbeing and protection start with the entrance door.



**Significant energy saving
due to maximum compression
of the door seal**

A new perspective for security and comfort



Patented twin-motor principle

Quality in every detail

Each and every individual **multitronic** 881 component satisfies the most demanding requirements and delivers powerful advantages.

Rapid unlocking

- The patented high-performance gearbox is equipped with two motors and unlocks within one second.

Superior locking force

- Two motors provide a high level of thrust, resulting in maximum locking force.

Comfort and panic function

- Intuitive door opening via lever handle operation from the inside due to standard panic exit function. The system has been tested and certified to meet DIN EN 1125 and DIN EN 179 as panic and emergency exit lock.

Trouble-free functionality

- The locking system has passed continuous mechanical tests completing more than 200,000 cycles successfully.
- High-performance twin-motor principle without risk of self-blockade in the event of power failure.
- Due to the patented transmission clutch, inserted keys do not turn during motorised operation.

Diversity of optional connections

- A vast variety of components can be connected directly to the multi-function socket located on the motor drive. Potential-free (isolated) and powered inputs as well as fused 350mA output offer the possibility of connecting access control systems such as transponder, keypad or fingerprint scanner, or illuminated push plates and glazed components.



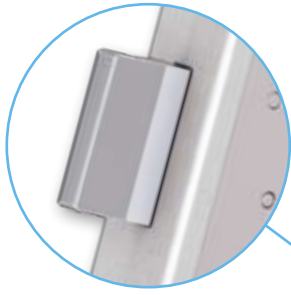
Reed switch to monitor position of door leaves



Operational reliability guaranteed by special magnets



Optimum energy rating due to permanent draught-proofing achieved through adjustable locking components



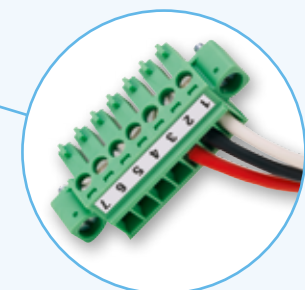
High-tensile steel latches, bolts and gear box components



Comfortable internal lever handle opening – intuitive and certified



Patented transmission clutch reduces cylinder wear to a minimum



Universal connections directly into the motor terminal block



Sensors within the motor drive to monitor and control latch position

Extremely easy to operate

Intelligent control technology for any system requirement

The core of the motorised locking system **multitronic 881** consists of intelligent control technology that combines convenience and security effortlessly. It is pre-calibrated for various system requirements and stages of expansion. Perfectly suited for use in residential and commercial properties. Everywhere, where individuality is required.

Multi-functional control with cable guide

- Visual locking status indicator
- Integrated, removable radio receiver
- Interface for all potential applications due to standard inputs & outputs for:
 - Access control systems such as transponder, number keypad, fingerprint scanner, eye scanner, etc.
 - Intercom systems
 - BMS Building management systems
 - Manipulation signal for alarm systems
 - Electronic disconnection of access control systems for alarm systems
 - Signal for automatic swing door operators
 - Day-latch-function/permanent-open-function
- Surface-mounted cable guide
- Easy installation due to self-latching plug-in connector



- Control switch
- Radio receiver
- Intercom
- Alarm system
- BMS Building management system
- Swing door operator
- Access control systems
- Timer
- Activation of intruder alarm

Images: 6 DORMA; 7 Kaba GmbH; 8,9 GIRA

It doesn't get any easier than this

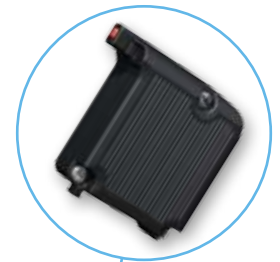


Comfortable opening by remote control

Where only a radio signal is needed to open the door, this patented radio module which can be clipped onto the motor drive, is all that is required. A separate control is not necessary. It is compatible with all FUHR access control systems and demonstrates, how intelligent technology offers the highest level of operating convenience.

Radio receiver module

- Rolling-Code-radio receiver
- With master radio key
- Compatible with all FUHR access control systems
- 25 transmitters, programmable/erasable via master radio key
- Plugs onto motor drive
- Cut-outs no longer necessary
- LED-programming switch can be reached through lock face plate
- Connects directly to the motor drive socket
- 2-wire technology between mains adapter and motor drive is sufficient
- Item no. NBF490





At last - no more key ring

Other wireless radio-based types of access control systems are available in addition to the standard remote control key. These are characterised by easy and keyless operating convenience, while meeting the highest security standards.



- 2-channel technology to open main entrance door and garage for example
- All components in micro design and concealed within the door leaf
- Suitable for any door – uPVC, aluminium or timber

Your finger is the only requirement

- Lost or forgotten keys are a thing of the past.
- Slammed doors are no longer a problem, since you always have your 'key' with you.
- Additional keys are obsolete – you can authorise access yourself very easily.
- Cumbersome key rings are a thing of the past – particularly convenient for runners/athletes.

Radio keypad

The radio keypad enables convenient door opening by the stroke of a key. Not only does the illuminated stainless steel keypad equipped with LEDs look good, it can be operated safely in darkness.



Modern wireless access control components with 2-channel technology provide a high level of operating convenience



Radio transponder reader



The radio transponder reader is one of the most well-known access control modules for the multipoint lock FUHR **multitronic 881**. Recognised as 'key and ID technology' this method is regarded as the first choice in modern access control.

Radio fingerprint scanner



The keyless biometric system represents the ultimate in secure and intelligent access control systems. While the FUHR fingerprint scanner is aesthetically pleasing, it also offers the highest level of operating convenience. The scanner area is permanently illuminated which makes it easy to operate, even in darkness.



Install, connect, finished.

FUHR multitronic 881 is always the first choice in implementing sophisticated applications. Intelligent technology and modular system are versatile and suited for any possible application while being suitable for uPVC, aluminium and timber doors.

The standard model includes all system components ready for connection in a complete kit. These can all be integrated into the door, thus enabling the door manufacturer to deliver a finished door where all functions have been tested. Install, connect, finished!



Ordering and installing the complete kit is trouble-free. All components can be pre-installed at the door factory. When the door arrives on site it merely has to be connected to a 230 V power supply. The kit includes 3 radio keys, one of which is a master key.



Complete kit



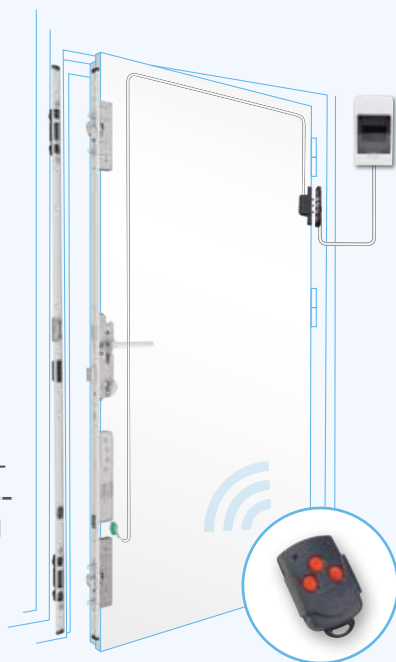
All components integrated into door



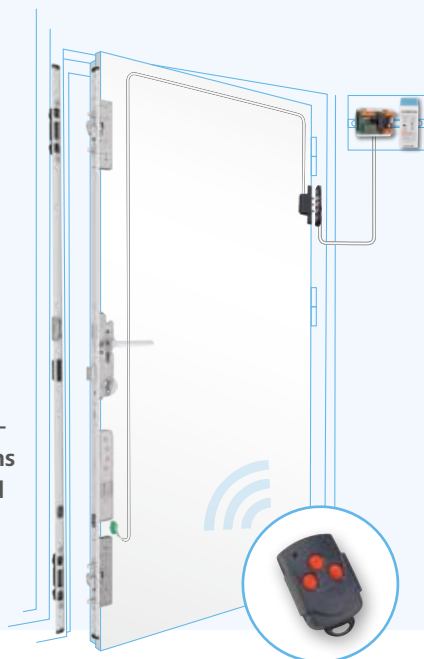
Performance-check carried out

The sophisticated system for any eventuality

Sample installation – control box with integrated wall mounted mains adapter

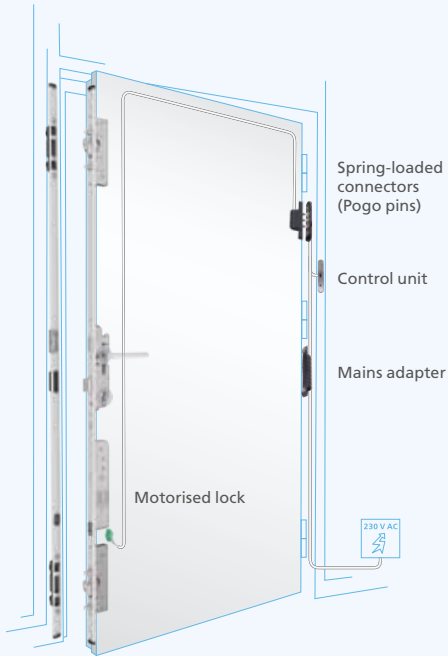


Sample installation – control box and mains adapter rail mounted and housed in plant room/cabinet



Simply for any application

The modular format with its individual components is ideally suited to implement project-specific requirements. It is also perfect for retro-fitting and integration into existing buildings. All system components are fitted easily and the electrical installation is very straightforward. Retrospective functionality extension is also uncomplicated. We also offer bespoke solutions for a vast variety of requirements and would be pleased to assist and advise you.



Quality supplied as standard to ensure easy installation

The **multitronic** complete kit is all-inclusive. All lock, motor drive and accessory components have been coordinated to complement each other perfectly and allow for an efficient installation due to pre-assembled plug-in connector.

Unique lock technology

- With integrated panic function for convenient opening
- Particularly smooth opening due to a uncoupled lock transmission
- No dangling keys during motor movement
- Premium quality steel dead-bolt and latch

Twin-motor

- High performance gear box with 2 motor drives allows particularly quick and powerful locking and unlocking
- Includes multi-function terminal block with input and output for:
 - Access control systems such as transponder, fingerprint scanner, keypad, etc.
 - 12V DC power supply for illuminated glazing panels, push plates or access control

Strike plates/ one-piece strike plate

- Depending on the profile, individual strike plates or a one-piece strike plate including magnet contact is supplied. It activates the sensor on the motor drive, which triggers the locking action.



Multi-functional control

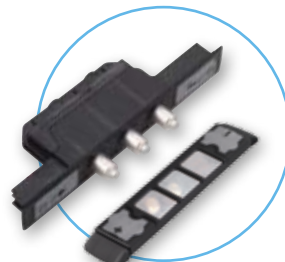
- Visual locking status indicator
- Integrated radio receiver
- Interface for all potential applications due to standard inputs & outputs for:
 - Access control systems such as transponders, number keypad, fingerprint scanners, eye scanners, etc.
 - Intercom systems
 - BMS building management systems
 - Manipulation signal for alarm systems
 - Electronic disconnection of access control systems for alarm systems
 - Signal for automatic swing door operators
 - Day-latch-function/permanent-open-function
- Surface-mounted cable guide

The entire set of components at a glance



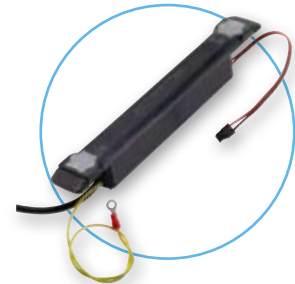
Radio keys

- 3 keys included – 1 master and 2 user radio keys
- Copy-protected due to master function
- Scan-safe due to copy-protected rolling-code, that changes the code after transmission of each and every signal
- 3-channel technology to open main entrance door, garage door and gate using only one radio key
- Long range
- Long-life battery
- Sliding protective cover



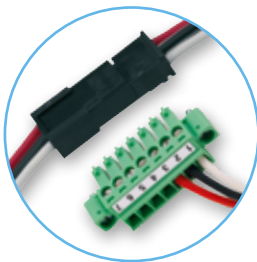
Spring-loaded connectors (Pogo pins)

- For wireless power and data transfer
- Durable and reliable due to 3 precision silver-plated spring-loaded connectors (Pogo pins)
- Concealed – no visible cable junctions
- No cable break
- Vandalism-proof
- Door leaf can be dismantled and re-hung at any time
- No restriction of opening angle
- With multi-function terminal block for connection with motor
- Profile-specific designs



Electronically regulated transformer

- Input 230 VAC/output 12 VDC
- Short-circuit proof and overload proof due to fully electronic cut-off
- High level of security due to fully enclosed housing
- Compact construction
- Profile-specific designs



Plug-in connector

- All components are pre-assembled including cable connections and plug-in connector
- Distortion-proof, clip-on, high impact & vibration resistance
- Straightforward installation



Optimised cable guides

- Cable guide-plates prevent potential cable damage during fixing
- Cover face plates with angled caps conceal all wiring thus ensuring an aesthetic appearance of the rebate
- Rubber protection bushes protect against sharp-edged drill holes



Installation and maintenance items

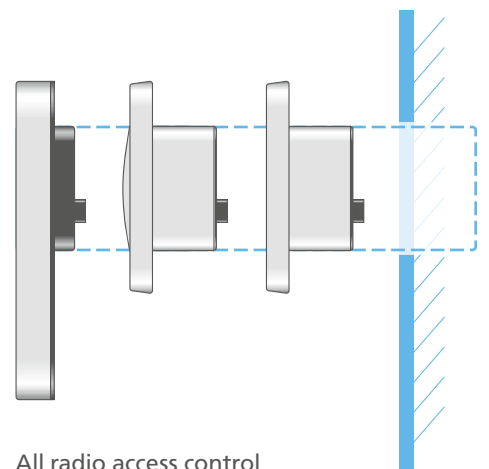
- Detailed installation, operating and maintenance instructions including profile-specific cut-out templates
- Contact grease for contact areas to guarantee connection between the contact surfaces and spring-loaded points (Pogo pins)

Quality that underlines security: Optional radio access control components



Covers for radio access control modules

- Model for use with radio fingerprint scanner and transponder reader, stainless steel effect: item no. NB252N, stainless steel: on request
- Model for use with radio keypad, stainless steel effect: item no. NB405N, stainless steel: on request



All radio access control components are interchangeable due to identical cut-out dimensions.



Radio keypad

- Versatile 2-channel technology to open main entrance door and garage door for example
- A third extra channel can be used as bell switch for an optionally available radio gong
- Individually programmable 4 to 8 digit opening code
- Opening impulse via rolling-code process
- Safety barrier to counteract manipulation attempts
- Codes remain intact, even in the event of power failure
- Number keypad illuminated at the push of a button
- Keypad made from high-grade stainless steel
- LED-display for operating and programming purposes
- Plug-in power supply via motor drive
- Electronics sealed to provide weather tightness and manipulation protection
- Cover plates available as optional extra
- Can be combined with radio key, radio fingerprint scanner or radio transponder reader as well as intercom systems
- Item no. NB404



Radio transponder reader

- Versatile 2-channel technology to open main entrance door and garage door for example
- 2 master and 3 user transponders included in delivery
- Very simple approval and blocking of access authorisation (200 transponders) – via master transponder
- Opening impulse via rolling-code process
- Forgery and tamper-proof
- LED-display for operating and programming purposes
- Plug-in power supply via motor drive
- Electronics sealed to provide weather tightness and manipulation protection
- Cover plates available as optional extra
- Can be combined with radio key, radio fingerprint scanner or radio keypad as well as intercom systems
- Item no. NB540
- Optional model includes programming (pairing) function for car key, item no. NB403



Radio fingerprint scanner

- Versatile 2-channel technology to open main entrance door and garage door for example
- Very simple approval and blocking of access authorisation (up to 200 fingers) – via master finger
- Opening impulse via rolling-code process
- Forgery and tamper-proof
- Tamper-proof – usable fingerprints do not cling to the sensor, the captured data is electronically converted immediately
- Robust, thermal line sensor – not sensitive to environmental influences such as humidity, pollution, oil, etc.
- LED-display for operating and programming purposes
- Illuminated scanner surface
- Ergonomically recessed finger guide – guarantees precise finger identification
- Plug-in power supply via motor drive
- Electronics sealed to provide weather tightness and manipulation protection
- Cover plates available as optional extra
- Can be combined with radio key, radio transponder reader or radio keypad as well as intercom systems
- Item no. NB366

Components and accessories providing personalised added functionality



Multi-function control with stainless steel cover

- Exclusive thin, elegant shape - only 3.5 mm deep
- Model for use with internal hinges
- Offers optional installation into rebate
- Premium quality cover made from brushed stainless steel
- Visual locking status indicator
- Integrated, removable radio receiver
- Interface for all potential applications due to standard inputs & outputs for:
 - Access control systems such as transponder, number keypad, fingerprint scanner, eye scanner, etc.
 - Intercom systems
 - BMS Building management systems
 - Manipulation signal for alarm systems
 - Electronic disconnection of access control systems for alarm systems
 - Signal for automatic swing door operators
 - Day-latch-function/permanent-open-function
- Includes master radio key
- Easy installation due to self-latching plug-in connector
- Item no. NZSTP0419



Control switch for special functions

- For manual activation of day-latch-function/permanent-open-function
- Cover with sliding switch and connection cable
- Ideal for residential and commercial buildings alike
- Appropriate model for both multi-function controls
- Easy installation
- Item no. for multi-function control with silver coloured cover: NZSTZ0265
- Item no. for multi-function control with stainless steel cover: NZSTZ0459



Control box

- Ideally suited for retro-fitting
- Junction box contains:
 - Control circuit board including radio receiver with all standard functions and connection options
 - Mains adapter, input voltage: 90-265 VAC, output voltage: 12 VDC/2,1 A
- With master radio key
- Item no. NZSTP497



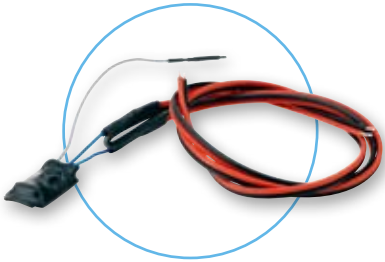
Rail-mounted control

- For use in commercial buildings or for retro-fitting
- Control circuit board including radio receiver with all standard functions and connection options
- For rail installation
- For external installation in plant room/cabinet
- For a rail width of 35 mm meeting DIN EN 50022
- Clip-on aluminium base support
- With master radio key
- Item no. NZSTP80069



Rail-mounted mains adapter

- For use in commercial buildings or for retro-fitting
- For rail installation
- For external installation in plant room/cabinets
- For a rail width of 35 mm meeting DIN EN 50022
- Input voltage: 100-240 VAC, output voltage: 12 VDC/5A
- CE approved/RoHS conformity
- Item no. NZT80086



Built-in transmitter - follower release contact

- For use with multitronic 881 with follower release contact
- Connection between lever handle contact and motor
- Operation of panic lever handle activates the built-in transmitter, which then sends a signal to a radio gong (audible lever monitoring) for example
- Sends a radio signal when powered with a voltage between 5-24 VAC or 6-32 VDC
- Pre-assembled connection cable, 800 mm
- Item no. NZ80124



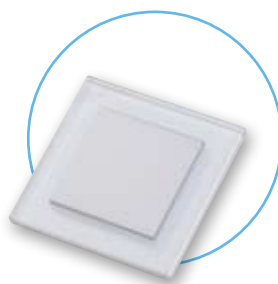
Built-in transmitter - intercom

- For installation in intercom systems
- Sends a signal to open the door when powered with a voltage between 5-24 VAC or 6-32 VDC
- Pre-assembled connection cable
- Item no. NZ80123



Radio transmitter for flush-mounted installation

- Battery-operated
- Can be connected to any mechanically-operated push button switch
- Sends a radio signal to open the door
- 4 Channels
- Can also be installed into wheelchairs with key-pad integrated in the arm rest
- Item no. NZ0084



Radio wall-mounted switch

- For convenient door opening from the inside at the push of a button
- Battery-operated – no wiring necessary
- Long range
- Can be positioned anywhere
- Mounted with double sided adhesive tape or screws
- Silver colour with glass frame
- Goes well with almost any type of switch due to its neutral and elegant appearance
- Item no. NZ80021AS



Components and accessories providing personalised added functionality



Plug socket radio receiver

- Activates existing external drive units such as garage doors via rolling-code in response to radio transmitter (radio keys, fingerprint scanner, transponder, keypad)
- Programmable for up to 10 FUHR radio transmitters
- Suitable for Schuko electric plug sockets (standard German plug sockets)
- Produces a potential-free signal
- Separate mains power supply NOT necessary
- Item no. NZ80088



Plug socket radio gong

- For use with **multitronic 881** with follower release contact
- Receives the signal emitted by radio keypad, radio wall-mounted switch or built-in transmitter
- Programmable for up to 32 FUHR radio transmitters
- With visual display and audio signal
- Can also be used for audible lever handle monitoring
- Suitable for Schuko electric plug sockets (standard German plug sockets)
- Item no. NZ80122



Radio plug socket

- 230 V-plug socket activated by rolling-code radio transmitter
- Compatible with Schuko plugs
- Simply insert between normal plug socket and the devices that you want to operate
- Programmable for up to 10 FUHR radio transmitters (radio key, fingerprint scanner, transponder or keypad)
- Any device can be switched on or off via the programmed/paired radio transmitters. A lamp can for example be switched on via the radio key
- Item no. NZ80134



Universal adapter

- Activates existing external drive units such as garage doors via rolling-code in response to radio transmitter (radio keys, fingerprint scanner, transponder, keypad)
- Programmable for up to 10 FUHR radio transmitters
- Produces a potential-free activation signal
- External power supply necessary – 12-24 VAC/DC
- Item no. NZ80023



Control-LED – for the external side of the door

- Illuminates red as soon as the door is locked
- Flashes red as soon as access control has been switched off
- Serves as visual examination/monitoring tool
- Serves as deterrent for potential intruders
- Pre-configured, includes mains plug
- Cable length 800 mm
- Can be connected directly to the motor drive
- Item no. NZ80067



Follower release contact

- Optional extra for **multitronic 881**
- Integrated switching contact to monitor follower
- Enables 'authorised exit' when intruder alarm is active
- Suitable for residential and commercial sectors alike
- Suitable also for split follower.
- For wired application with cable junctions
- For item number please refer to catalogue



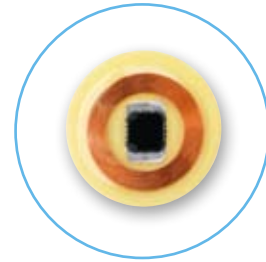
Radio key

- Additional radio keys
- Turquoise coloured buttons
- Battery operated
- 3 channel technology
- Rolling-code
- Long range
- LED display
- Sliding protective cover
- Item no. NZ80062



User transponder

- User transponder as key fob
- Tamper-proof
- No batteries required
- Item no. NZ80104



User transponder

- Self-adhesive user transponder
- Only 0,8 mm high, Ø 20 mm
- Tamper-proof
- No batteries required
- Item no. NZ80117



Connection cable

- Pre-assembled cable sets are available, requirement depends on application
- Item no. on request



Cable junction

- Surface-mounted cable junction
 - Brass, chrome plated; length 500 mm
 - Item no. NZ80089
- Concealed, flush mounted cable junction
 - Brass, chrome plated; length: 370 mm,
 - Opening angle: max. 120°
 - Item no. NZ80090



All images, dimensions, product and design related information represent the latest version at the time of printing. We reserve the right to changes that serve the purpose of technical progress and further development. Model and product claims cannot be lodged.

Your specialised dealer



More information can be found in our extensive catalogue "Security systems for doors, windows and gates" or at: WWW.FUHR.DE

CARL FUHR GmbH & Co. KG
Schlösser und Beschläge

Carl-Fuhr-Straße 12 · D-42579 Heiligenhaus
Tel.: +49 2056 592-0 · Fax: +49 2056 592-384
www.fuhr.de · info@fuhr.de

FUHR UK Ltd.

Unit 7, Hortonwood 32 · Telford, Shropshire TF1 7YN
Fon: +44 (0) 1952 228777 · Fax: +44 (0) 1952 228744
www.fuhr.co.uk · info@fuhr.co.uk

FUHR